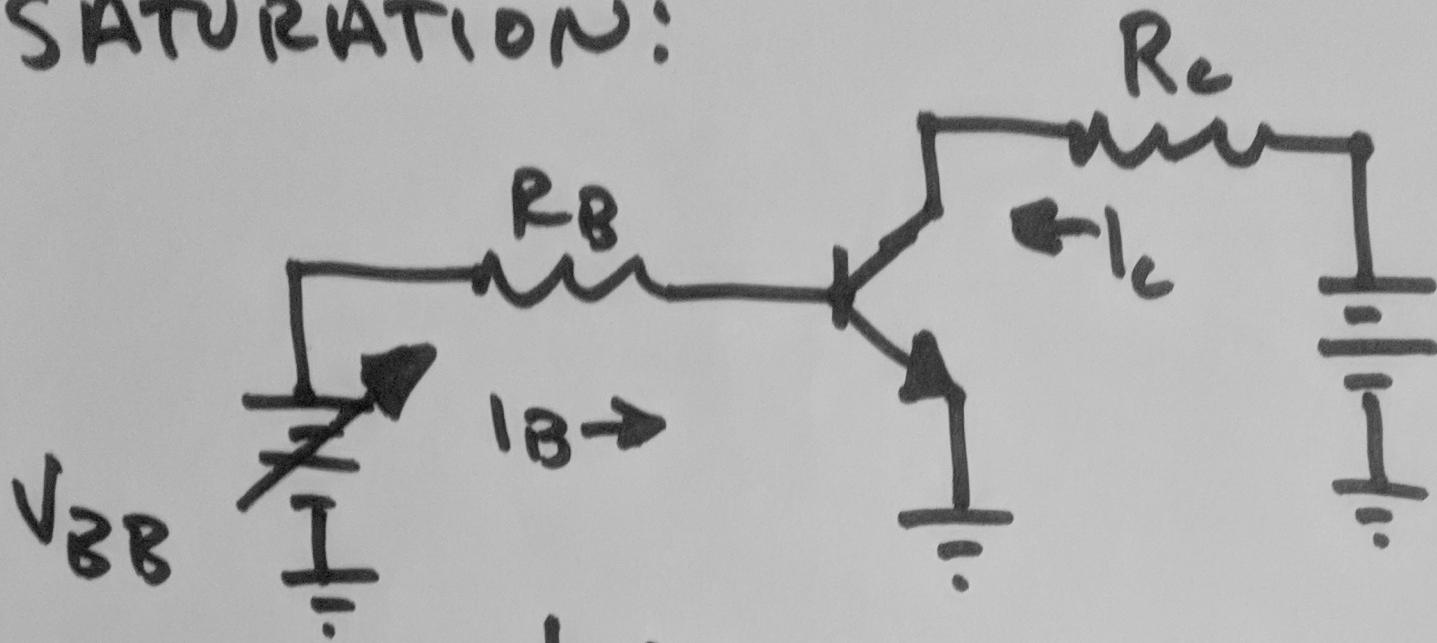


SATURATION:

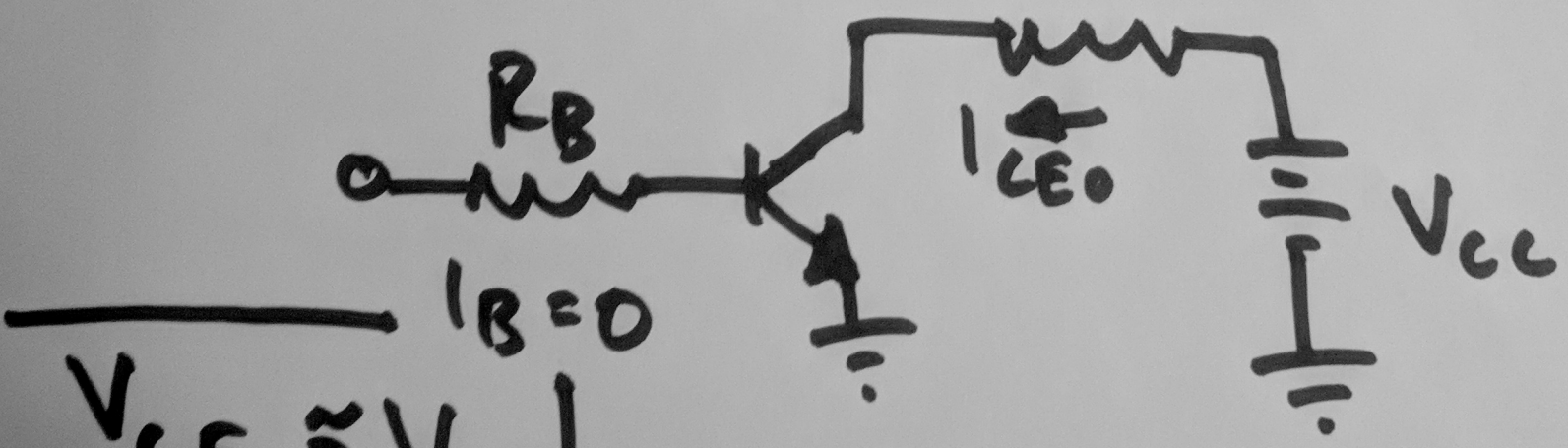


$V_{CE} = V_{CC} - I_C R_C$
 $B_E, B_C - \text{FWD BIAS}$

AS $I_B \uparrow, I_C \uparrow, V_{CE} \downarrow$
 ~~I_C INCREASE,~~
REGARDLESS I_B

$$I_C = \beta I_B$$

CUTOFF:



$I_B = 0$
 $V_{CE} \approx V_{CC}$