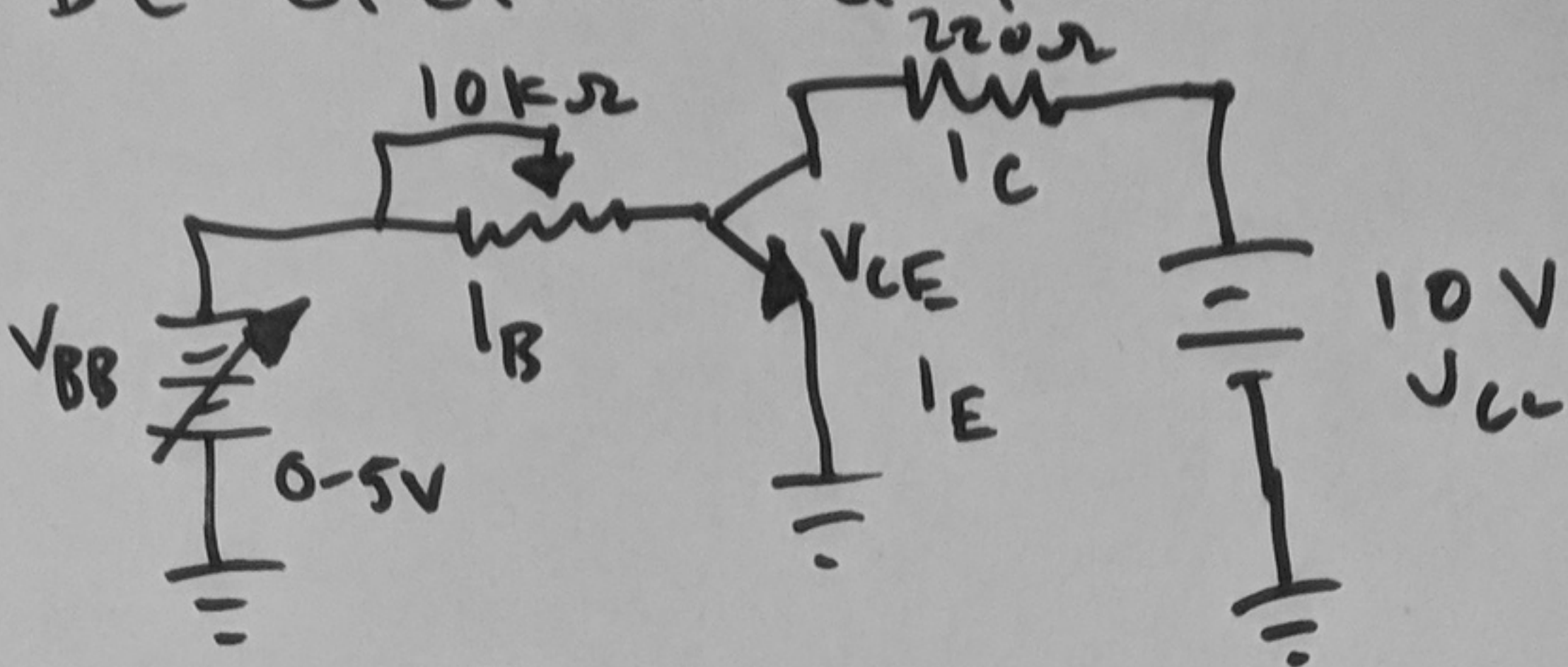
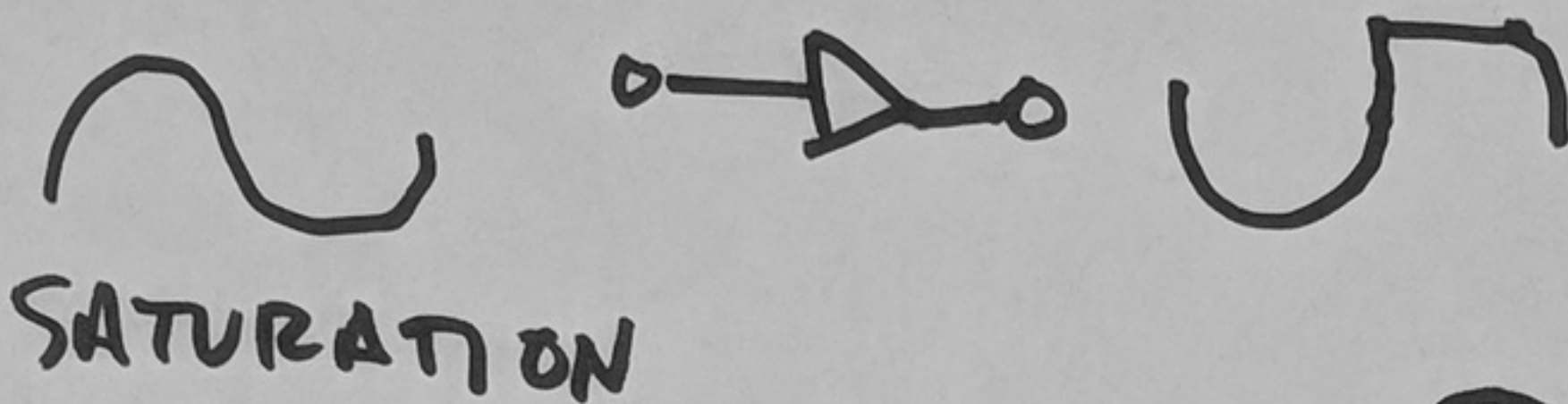
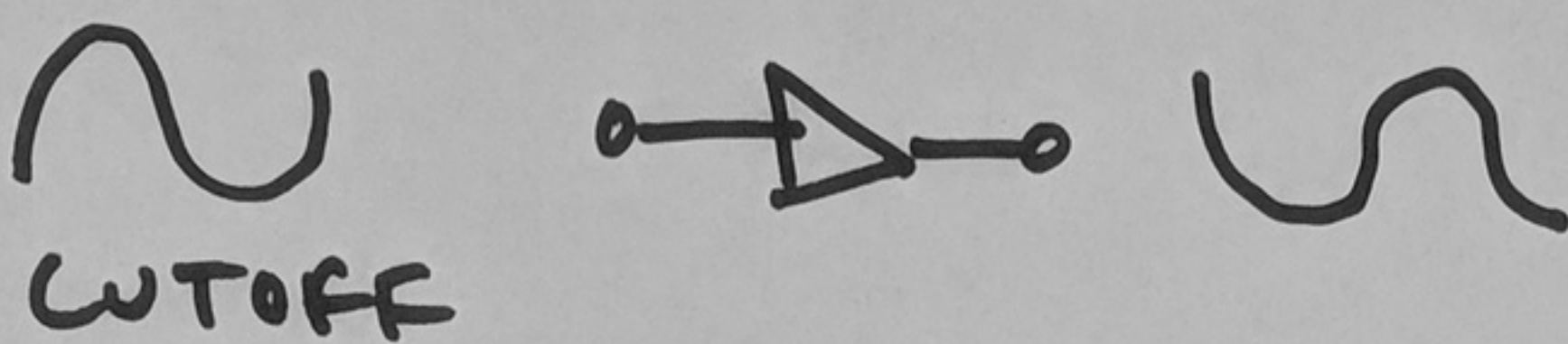


DC OPERATING POINT:

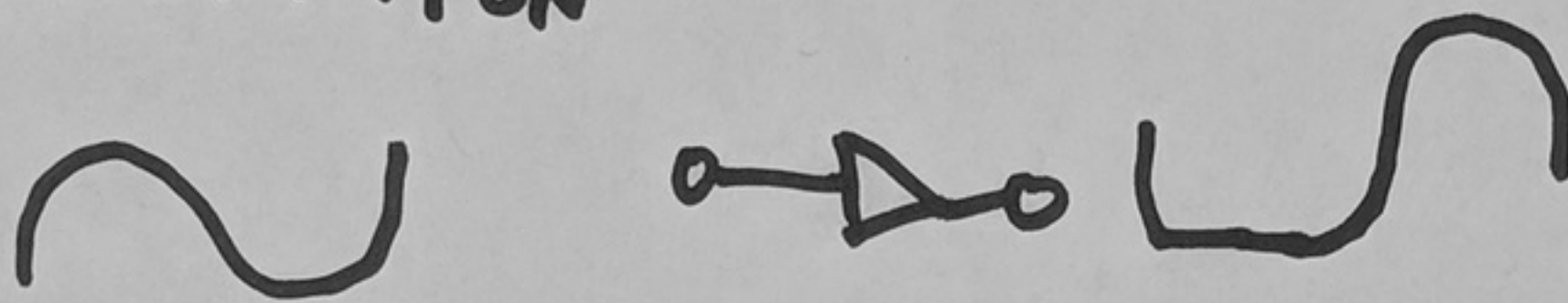


$$\beta_{DC} = 100$$

LINEAR



SATURATION



$$I_C = \beta_{DC} I_B$$

$$V_{CE} = V_{CC} - I_C R_C$$

SATURATION $I_C = (I_{C(SAT)})$

CUTOFF

$$V_{CE} = V_{CC}$$

